



MTA 5519 Series III

CONSTRUCTION telescopic handler

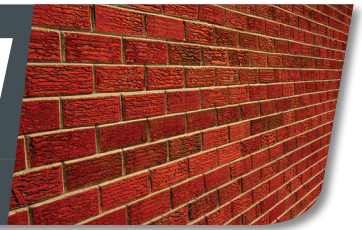


STANDARD FEATURES

- > 5,500 lbs. (2495 kg) Rated Capacity
- > 19'1" (5.8 m) Lift Height
- > 69-hp Tier IV Yanmar Engine
- > **ALL-NEW** Single Joystick (F-N-D)
- > Multi-Function Engine Diagnostic Display
- > 2-Speed Rexroth Transmission
- > Four-Wheel Drive / Four-Wheel Steer
- > Steering Wheel Mounted Horn
- > Power Port in Cab
- > Single Key Start
- > Lockable Storage Area in Cab

MTA 5519 Series III

CONSTRUCTION telescopic handler

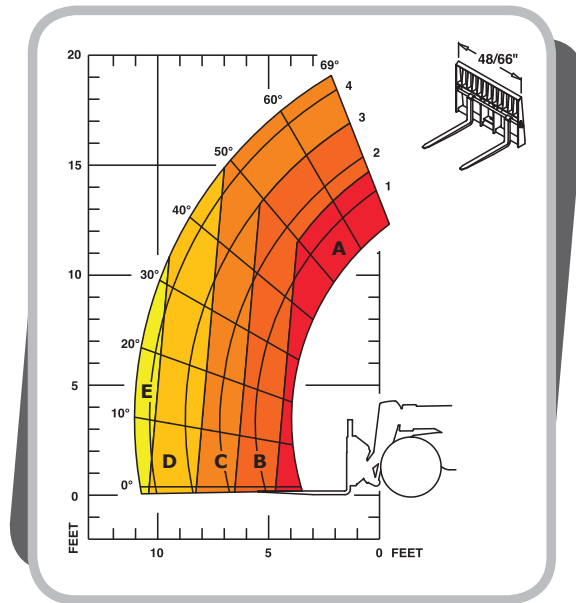


SPECIFICATIONS

| | | |
|-------------------------------|---|--|
| CAPACITIES | Lift Capacity (kg) | 5,500 lbs. (2495) |
| | Maximum Lift Height (m) | 19'1" (5.8) |
| | Capacity at Maximum Lift Height (kg) | 3,000 lbs. (1361) |
| | Maximum Forward Reach (m) | 11'0" (3.4) |
| | Capacity at Max. Forward Reach (kg) | 1,850 lbs. (840) |
| | Max. Reach Below Grade (mm) | 0" (0) |
| ENGINE | Manufacturer | Yanmar |
| | Power (kW) | 69 hp (50.1 kW) |
| | Aspiration | Natural |
| | Torque (Nm) | 173 ft.-lbs. (235) |
| | Model | 4TNV98C Tier IV |
| | Rated Speed | 2500 rpm |
| COMPONENTS | Transmission | Rexroth 2-Speed |
| | Maximum Travel Speed (km/hr) | 15 mph (24) |
| | Selective Steering | 4-wheel 2-wheel Crab |
| | Hydraulically Actuated Internal Wet-Disc Brakes | 2-wheel |
| | Parking Brake | Spring-Applied, Hydraulic Release (SAHR) on Front Axle |
| | Axle Manufacturer | Dana |
| HYDRAULIC SYSTEM | Pump Type | Gear |
| | Total Capacity (L/min) | 20 gpm (76) |
| | System Pressure (bar) | 3350 psi (231) |
| | Hydraulic Reservoir Capacity (L) | 18 gal. (68) |
| GENERAL SPECIFICATIONS | Approximate Weight (kg) | 10,000 lbs. (4536) |
| | Length – Less Forks (m) | 12'4" (3.8) |
| | Width (m) | 5'11" (1.80) |
| | Ground Clearance (mm) | 14" (350) |
| | Wheelbase (m) | 7'6" (2.29) |
| | Turning Radius (m) | 11'0" (3.35) |
| | Overall Height (m) | 6'4" (1.93) |
| | Frame Leveling | N/A |
| | Fuel Capacity (L) | 17 gal. (64) |
| TIRE OPTIONS | 12.00 x 16.5 Bias/10 PR | |
| | 12.00 x 16.5 Bias/10 PR Foam-Filled | |
| | 12.00 x 16.5 Solid Rubber | |
| | 12.00 x 16.5/10 PR Turf | |

LOAD CHART

Load chart based on a 24" (600 mm) load center per ANSI/ITSDF B56.6



- A.** 5,500 lbs. (2495 kg)
- B.** 4,000 lbs. (1815 kg)
- C.** 3,000 lbs. (1361 kg)
- D.** 2,000 lbs. (908 kg)
- E.** 1,850 lbs. (840 kg)

ALL-NEW!



Single Control Joystick with boom functions, fork tilt and aux. line control, and also F-N-R shifting.

ATTACHMENTS AVAILABLE:

**BUCKETS
FORKS
CARRIAGES
AND MORE!**



THE MANITOU QUICK ATTACH SYSTEM ALLOWS THE MT 5519 TO INTERCHANGE ATTACHMENTS WITHIN MINUTES!

This publication in no way constitutes an offer and the company reserves the right to alter specifications without notice.