

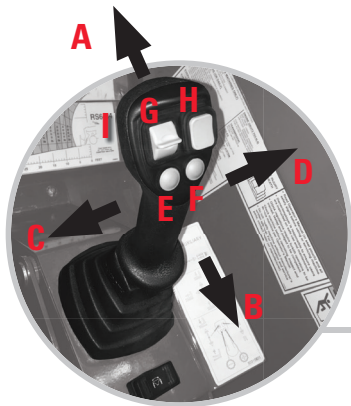
MTA 6034 SERIES III

CONSTRUCTION telescopic handler



KEY FEATURES

- > 6,000 lbs. (2722 kg) maximum lift capacity
- > 34'3" (10.4 m) maximum lift height
- > 4,000 lbs. (1815 kg) lift capacity to 34'3" (10.4 m)
- > 74 hp (55 kW) Deutz diesel engine
- > Four-wheel Drive/Four-Wheel Steer
- > ALL-NEW Single Joystick control with F-N-R



- A** Boom Down
- B** Boom Up
- C** Boom Retraction
- D** Boom Extension
- E** Transmission Shift Down
- F** Transmission Shift Up
- G** Fork Tilt
- H** Drive Direction - F-N-R
- I** Auxiliary Hydraulics

MTA 6034 SERIES III

CONSTRUCTION telescopic handler

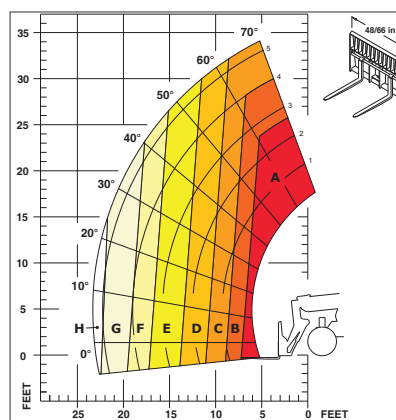
SPECIFICATIONS

CAPACITIES	Lift Capacity (kg)	6,000 lbs. (2722)
	Maximum Lift Height (m)	34'3" (10.4)
	Capacity at Maximum Lift Height (kg)	4,000 lbs. (1815)
	Maximum Forward Reach (m)	23'3" (7.0)
	Capacity at Maximum Forward Reach (kg)	900 lbs. (409)
ENGINE	Manufacturer	Deutz
	Power (kW)	74 hp (55)
	Torque (Nm)	244 ft.-lbs. (330)
	Model	TD3.6 Tier IV
	Rated Speed	2300 rpm
COMPONENTS	Transmission	Dana 3-speed Powershift
	Maximum Travel Speed (km/hr)	20.2 mph (32.5)
	Selective Steering	4-wheel 2-wheel Crab
	Brakes	4-Wheel
	Parking Brake	Spring-Applied, Hydraulic Release (SAHR)
	Axle Manufacturer	Dana
HYDRAULICS	Pump Type	Gear
	Total Capacity (L/min)	29 gpm (110)
	System Pressure (bar)	3,000 psi (207)
	Hydraulic System Capacity (L)	29 gal. (110)
GENERAL SPECIFICATIONS	Approximate Weight (kg)	15,100 lbs. (6850)
	Length – Less Forks (m)	16'0" (4.9)
	Width (m)	7'10" (2.4)
	Ground Clearance (mm)	14" (350)
	Wheelbase (m)	9'2" (2.8)
	Turning Radius (m)	12'6" (3.8)
	Overall Height (m)	7'10" (2.4)
	Frame Leveling	±10°
	Fuel Capacity (L)	29 gal. (110)



STANDARD FEATURES

- Three (3) Steering Modes - Front Wheel, All Wheel and Cab
- 3-Speed Powershift Transmission
- DYNATTACH® Quick Attachment System
- Four Wheel Wet Disc Brakes
- Frame Leveling ±10° (Left or Right)
- Full Time Four Wheel Drive
- Left Hand Front Fender
- Planetary Axles with Open Center Differential
- Power Steering
- SAHR Parking Brake
- Transmission Clutch Cut-Out
- 12 Volt Electrical System
- Backup Alarm
- Backup Light
- Brake Lights
- Engine temperature, fuel and hourmeter gauges
- Deutz Turbocharged diesel engine
- Dual Element Air Filter with Restriction Indicator
- Engine Block Heater
- Glow Plug Cold Weather Start
- Automatic Self-Leveling Fork System
- Frame Level Switch
- Power Port
- Right-Hand Side Mounted Rear View Mirror
- Single Control Joystick with F-N-R and Transmission Speed Control



LOAD CHART

A	6,000 lbs. (2722 kg)	E	2,000 lbs. (907 kg)
B	5,000 lbs. (2268 kg)	F	1,500 lbs. (680 kg)
C	4,000 lbs. (1814 kg)	G	1,000 lbs. (454 kg)
D	3,000 lbs. (1361 kg)	H	900 lbs. (408 kg)

Load charts based on a 24" (610 mm) load center per ANSI/ITSDF B56.6



MANITOU AMERICAS, INC. • PO Box 179 • West Bend, WI 53095
Tel: 262-334-9461 • Fax: 262-338-7517 • www.manitou.com