



MTA *SERIES III*

CONSTRUCTION TELESCOPIC HANDLERS





SUCCESS THROUGH IMAGINATIVE POWER

MANITOU, the world's largest manufacturer of all-terrain material handling equipment, began its roots in a family tradition of innovation and imaginative power. For generations, the Braud family has dedicated themselves to creating innovative products for the lifting and handling markets.

Manufacturing its first forklift truck in 1957, MANITOU is a pioneer in the rough terrain forklift market. By responding to market trends, MANITOU offers a complete line of rough terrain handling equipment adapted to the specific needs and challenges of each industry.

The long history of reliable, relevant equipment has led to more than 500,000 MANITOU machines operating daily in more than 140 countries. This worldwide presence is backed up by a MANITOU dealer network staffed with trained mechanics and sales specialists to help you with your material handling requirements.

REACHING NEW HEIGHTS

The MANITOU MTA Series III telescopic handlers, provide superior performance meeting the needs of today's jobsite demands. Lifting up to 12,000 lbs. (5444 kg) (MTA 12042) with lift heights up to 55'1" (16.8 m) (MTA 10055), these machines provide the extra working capacity without sacrificing the comfort and durability expected in the MTA Series III telescopic handlers.

MTA 5519 SERIES III

5,500 lbs. (2495 kg) lift capacity
19'1" (5.8 m) lift height
68 hp (50.7 kW)



MTA 6034 SERIES III

6,000 lbs. (2722 kg) lift capacity
34'3" (10.4 m) lift height
74 hp (55 kW)



MTA 6642 SERIES III

6,600 lbs. (2994 kg) lift capacity
42'0" (12.8 m) lift height
120 hp (89 kW)



MTA 8044 SERIES III

8,000 lbs. (3629 kg) lift capacity
44'0" (13.4 m) lift height
120 hp (89 kW)



MTA 9050 SERIES III

9,000 lbs. (4082 kg) lift capacity
50'1" (15.3 m) lift height
120 hp (89 kW)



MTA 10044 SERIES III

10,000 lbs. (4536 kg) lift capacity
44'0" (13.4 m) lift height
120 hp (89 kW)



MTA 10055 SERIES III

10,000 lbs. (4536 kg) lift capacity
55'1" (16.8 m) lift height
120 hp (89 kW)



MTA 12042 SERIES III

12,000 lbs. (5444 kg) lift capacity
42'4" (12.9 m) lift height
120 hp (89 kW)



PERFORMANCE

■ POWER and ■ PERFORMANCE

SUPERIOR STRENGTH AND DURABILITY

■ PROVEN RELIABILITY = PROFITABILITY

High quality components are at the core of the MTA Series III – reducing downtime and increasing your bottom line. These machines are continuously sought after for their unmatched performance, reliability, ease of operation, and comfort.

■ TIER IV-CERTIFIED ENGINES

All Manitou MTA Series III Telescopic Handlers are equipped with Tier IV certified diesel engines.

MTA 5519 SIII **Yanmar - 69 hp (50.1 kW)**

MTA 6034 SIII **Deutz - 74 hp (55 kW)**

MTA 6642 SIII - **Cummins - 120 hp (89 kW)**
MTA 12042 SIII

■ FOUR-PLATE BOX SECTION BOOMS

Field proven design can easily handle the 5,500 to 12,000 lbs. (2495 to 5444 kg) rated loads of the MTA Series III.

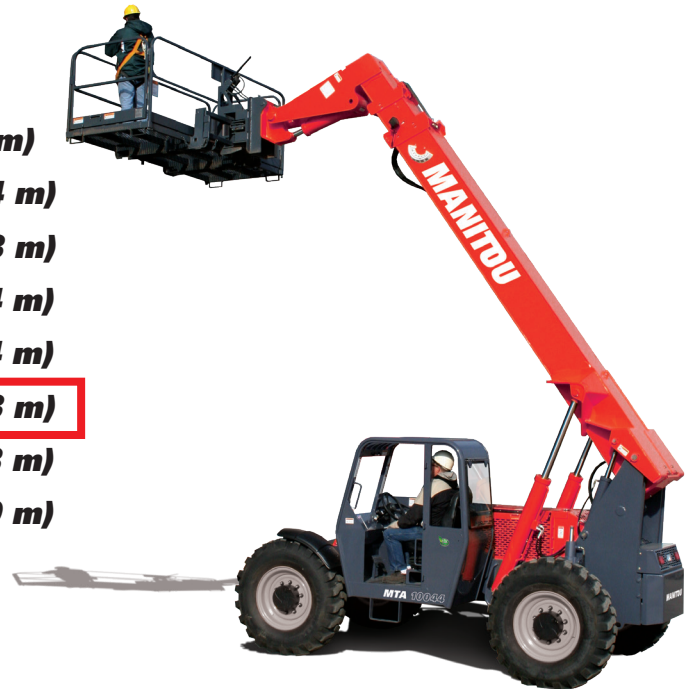
■ SELF LEVELING FORKS

This standard feature automatically levels the forks or attachment as the boom is raised, eliminating the need for manual adjustments.



■ MAXIMUM LIFT HEIGHTS

MTA 5519 SIII	19'1" (5.8 m)
MTA 6034 SIII	34'3" (10.4 m)
MTA 6642 SIII	42'0" (12.8 m)
MTA 8044 SIII	44'0" (13.4 m)
MTA 10044 SIII	44'0" (13.4 m)
MTA 9050 SIII	50'1" (15.3 m)
MTA 10055 SIII	55'1" (16.8 m)
MTA 12042 SIII	42'4" (12.9 m)



■ EXCEPTIONAL VISIBILITY

Large, open concept frame design with high-mounted boom allows the operator to have views from all sides of the operator station.

■ FRAME LEVELING $\pm 10^\circ$

The MTA 6034 SIII through MTA 12042 SIII machines come standard with frame leveling, making it easy to travel and work on uneven surfaces.

■ RATED OPERATING CAPACITIES

MTA 5519 SIII	5,500 lbs. (2495 kg)
MTA 6034 SIII	6,000 lbs. (2722 kg)
MTA 6642 SIII	6,600 lbs. (2994 kg)
MTA 8044 SIII	8,000 lbs. (3629 kg)
MTA 9050 SIII	9,000 lbs. (4082 kg)
MTA 10044 SIII	10,000 lbs. (4536 kg)
MTA 10055 SIII	10,000 lbs. (4536 kg)
MTA 12042 SIII	12,000 lbs. (5444 kg)

■ MULTIPLE TIRE OPTIONS

- ▶ Air-filled
- ▶ Foam-filled
- ▶ Solid Rubber
- ▶ Turf
- ▶ Rock Tread - Air / Foam

*Turf tires available only on MTA 5519 SIII.
Rock tread tires not available for MTA 5519 SIII
and MTA 6034 SIII.
Air tires not available on MTA 9050 SIII.*

■ REAR AXLE STABILIZATION

Stabilizer cylinder locks the rear axle to improve stability whenever the boom is raised above 60 degrees or engine shuts down or the parking brake is applied.

*Standard on MTA 6642 SIII, MTA 8044 SIII,
MTA 9050 SIII, MTA 10044 SIII, MTA 10055
SIII, and MTA 12042 SIII.*



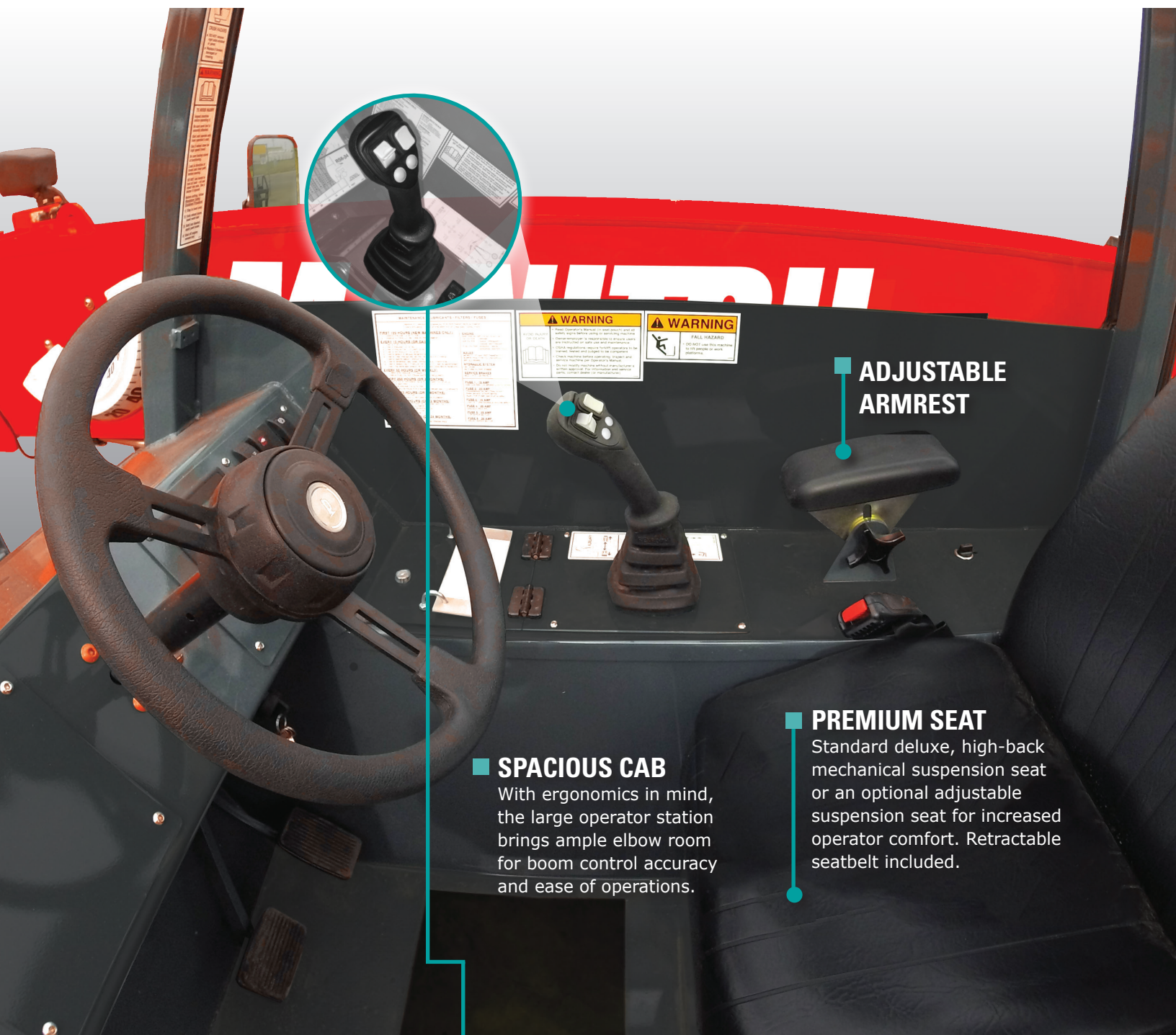
■ OUTRIGGERS

Increase stability and lift capacity on demand when lifting to full height.

*Optional on MTA 6642 SIII, MTA 8044 SIII,
MTA 10044 SIII, and MTA 12042 SIII; standard
on the MTA 10055 SIII.*

OPERATOR'S CAB

SAFETY and COMFORT



ADJUSTABLE ARMREST

PREMIUM SEAT

Standard deluxe, high-back mechanical suspension seat or an optional adjustable suspension seat for increased operator comfort. Retractable seatbelt included.

SPACIOUS CAB

With ergonomics in mind, the large operator station brings ample elbow room for boom control accuracy and ease of operations.

VISIBILITY

Low-profile boom and open-concept frame design provide a 360 degree field-of-view to all work areas for increased precision and safety.

ALL-NEW

SINGLE JOYSTICK OPTION WITH TRAVEL DIRECTION

Places boom extension and retraction, attachment tilt, auxiliary hydraulics AND travel direction all on the same joystick.

ALL-WEATHER CAB

Optional, sealed cab enclosure with heat allows you to work in constant comfort. Add air-conditioning for an upgraded operating climate.

■ OPERATOR STATION COMFORT FEATURES



WITHIN REACH

Lights, parking brake, and all other controls conveniently near the adjustable armrest.



POWER PORT

Standard 12-volt accessory plug charges electronics while you work.



GLASS WINDOWS

Rear and right-hand side glass are standard equipment to reduce engine noise to the cab.



DIGITAL DISPLAY

This information center shows real time fluid levels, engine RPM, machine hours, engine diagnostic codes, warning indicators and much more.



LOCKABLE STORAGE

Located under the seat, this spacious, lockable storage area holds items you need throughout the day.



HEAT & AIR CONDITIONING

Heat is standard on all cab models. Upgrade to air conditioning for additional operator comfort.

■ THREE STEERING MODES



2-WHEEL



4-WHEEL



CRAB

SERVICE & SAFETY

 SAFETY and  PRODUCTIVITY

 EXCELLENT 360 DEGREE VISIBILITY

FRONT

LEFT SIDE

REAR

RIGHT SIDE

EXPANSIVE VIEWS FROM ALL SIDES FOR SAFE AND PRECISE OPERATION.

Excellent visibility to the front, sides and rear of the machine allow for precise placement of loads and reduced jobsite incidents. A high-mounted boom maintains an excellent vantage point to the job at hand.

INCREASED PRODUCTIVITY ON THE JOBSITE



BOOM TIP LIFT HOOK

This option provides a secure lifting point for transporting suspended loads without the use of an additional attachment.

Not available on the MTA 5519 SIII or the MTA 6034 SIII



SERVICE MADE EASY

Accessible, tool-free panels allow for quick and easy maintenance, drastically reducing downtime on the job.

PERSONNEL WORK PLATFORM (PWP) SYSTEM

The optional Manitou PWP System allows the safe and efficient use of an ANSI/ITSDF B56.6 compliant work platform.

The PWP System makes every job almost as easy as working at ground level. When the system is engaged the transmission is temporarily disconnected, the rear axle stabilizer is engaged, the frame leveling speed is reduced, and the parking brake is applied. A remote shut-off is located on the platform. This increases safety and allows for precise positioning.

Not available on MTA 5519 SIII



CLEAR SIGHT LINES

Manitou is sure to raise the visibility of your operation with clear sight lines to all sides of the machine. This allows the operator to avoid jobsite obstacles, provides better visibility to workers outside the cab, and aids in precise placement of materials.

Where other machines struggle, the Manitou MTA Series are real serious when it comes to 360 degree visibility, even to the rear of the machine.



ATTACHMENTS

ATTACHMENTS

CRAVE VERSATILITY?

MANITOU MTA SERIES III TELESCOPIC HANDLERS ARE THE PERFECT SOLUTION.

Get the versatility you need to complete the job with a wide variety of attachments. With the MTA Series III Telescopic Handlers, your operation can do anything from material handling to lifting workers.



GET QUICKLY ATTACHED

The Quick-Attach system allows attachments to be interchanged with unsurpassed ease. The operator leaves the seat only to disengage the attachment.



BEST SELLERS LIST

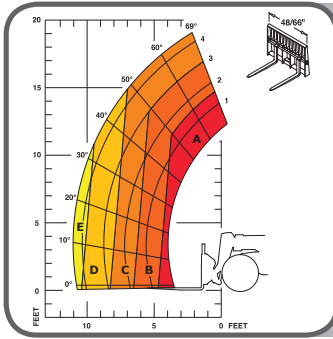
	MTA 5519 SIII	MTA 6034 SIII	MTA 6642 SIII	MTA 8044 SIII	MTA 9050 SIII	MTA 10044 SIII	MTA 10055 SIII	MTA 12042 SIII
BUCKETS								
Light Material Bucket - 96 in. (2438 mm) Wide, 1.3 cu. yd. (.99 cu. m.)		•	•	•		•	•	•
Light Material Bucket - 71 in. (1803 mm) Wide, 1.0 cu. yd. (.76 cu. m.)	•							
CARRIAGES								
Carriage, Masonry - 48 in. (1219 mm) Wide w/ 2 in. (50 mm) Pin / Rated 6,000 lbs. (2,721 kg)	•	•						
Carriage, Masonry - 48 in. (1219 mm) Wide w/ 2 in. (50 mm) Pin / Rated 10,000 lbs. (4,535 kg)			•	•	•	•	•	
Carriage, Masonry - 48 in. (1219 mm) Wide w/ 2.5 in. (63 mm) Pin / Rated 12,000 lbs. (5,443 kg)								•
Carriage, Rotating * - 48 in. (1219 mm) Wide w/ 2 in. (50 mm) Pin / Rated 6,000 lbs. (2,721 kg)	•	•						
Carriage, Rotating * - 48 in. (1219 mm) Wide w/ 2 in. (50 mm) Pin / Rated 10,000 lbs. (4,535 kg)			•	•	•	•	•	
Carriage, Rotating * - 48 in. (1219 mm) Wide w/ 2.5 in. (63 mm) Pin / Rated 12,000 lbs. (5,443 kg)								•
Carriage, Framers - 66 in. (1676 mm) Wide w/ 2 in. (50 mm) Pin / Rated 6,000 lbs. (2,721 kg)	•	•						
Carriage, Framers - 66 in. (1676 mm) Wide w/ 2 in. (50 mm) Pin / Rated 10,000 lbs. (4,535 kg)			•	•	•	•	•	
Carriage, Framers - 66 in. (1676 mm) Wide w/ 2.5 in. (63 mm) Pin / Rated 12,000 lbs. (5,443 kg)								•
Carriage, Framers - 72 in. (1828 mm) Wide w/ 2 in. (50 mm) Pin / Rated 10,000 lbs. (4,535 kg)			•	•		•	•	
FORKS								
Pallet Forks ** - 2 in. x 5 in. x 48 in. (50 mm x 127 mm x 1219 mm) for 2 in. (50 mm) Pin / Rated 10,500 lbs. (4,762 kg)		•	•	•		•	•	•
Pallet Forks - 2 in. x 4 in. x 48 in. (50 mm x 101 mm x 1219 mm) for 2 in. (50 mm) Pin / Rated 8,400 lbs. (3,810 kg)	•	•	•	•				
TRUSS BOOMS								
Truss Boom / 12 ft. (3.6 m) / Rated 2,000 lbs. (907 kg)			•					
Truss Boom / 15 ft. (4.5 m) / Rated 2,000 lbs. (907 kg)				•		•	•	•
PLATFORMS								
Personnel Work Platform - Requires PWP Dimensions - 4.0 ft. (1.2 m) Wide x 9.5 ft. (2.8 m) Long w/ 44 in. (1117 mm) High Guard Rail & Midrail (Complies with OSHA Regulations 1910.67(c)(2)(v) and 1926.453(b)(2)(v) and ANSI B56.6)		•	•	•		•	•	•

* Auxiliary hydraulics required

** On the MTA 12042 SIII, forks need to be used in conjunction with the 90° swing carriage.

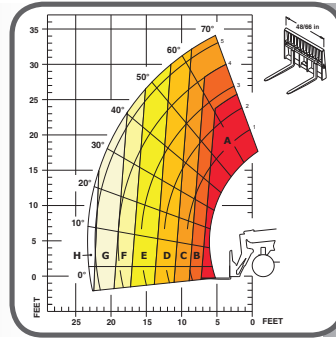
LOAD CHARTS

MTA SERIES III



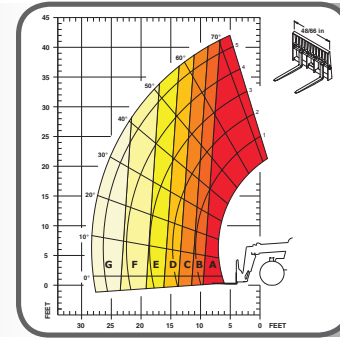
**MTA 5519
SERIES III**

- A** 5,500 lbs. (2495 kg)
- B** 4,000 lbs. (1815 kg)
- C** 3,000 lbs. (1361 kg)
- D** 2,000 lbs. (908 kg)
- E** 1,850 lbs. (840 kg)



**MTA 6034
SERIES III**

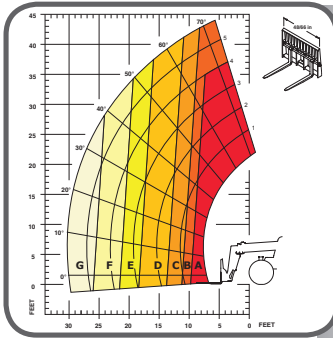
- A** 6,000 lbs. (2722 kg)
- B** 5,000 lbs. (2268 kg)
- C** 4,000 lbs. (1814 kg)
- D** 3,000 lbs. (1361 kg)
- E** 2,000 lbs. (907 kg)
- F** 1,500 lbs. (680 kg)
- G** 1,000 lbs. (454 kg)
- H** 900 lbs. (408 kg)



**MTA 6042
SERIES III**

- A** 6,600/6,600 lbs. (2994/2994 kg)
- B** 6,000/6,600 lbs. (2722/2994 kg)
- C** 5,000/6,000 lbs. (2268/2722 kg)
- D** 4,000/4,000 lbs. (1814/1814 kg)
- E** 3,000/4,000 lbs. (1361/1814 kg)
- F** 2,000/4,000 lbs. (907/1814 kg)
- G** 1,000/3,000 lbs. (454/1361 kg)

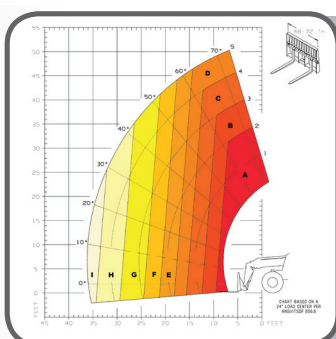
outriggers up / optional outriggers down



**MTA 8044
SERIES III**

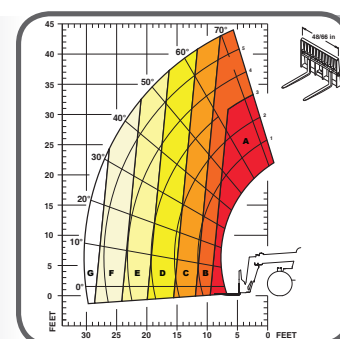
- A** 8,000/8,000 lbs. (3629/3629 kg)
- B** 7,000/8,000 lbs. (3175/3629 kg)
- C** 6,000/8,000 lbs. (2722/3629 kg)
- D** 4,000/6,000 lbs. (1814/2722 kg)
- E** 3,000/4,000 lbs. (1361/1814 kg)
- F** 2,000/4,000 lbs. (907/1814 kg)
- G** 1,000/3,000 lbs. (454/1361 kg)

outriggers up / optional outriggers down



**MTA 9050
SERIES III**

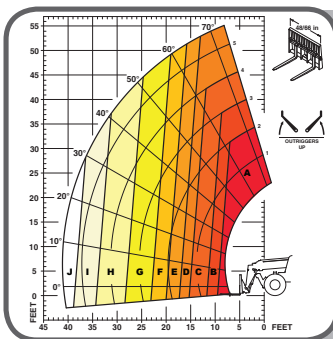
- A** 9,000 lbs. (4082 kg)
- B** 8,000 lbs. (3629 kg)
- C** 6,000 lbs. (2722 kg)
- D** 5,000 lbs. (2268 kg)
- E** 4,000 lbs. (1814 kg)
- F** 3,000 lbs. (1361 kg)
- G** 2,000 lbs. (907 kg)
- H** 1,000 lbs. (454 kg)
- I** 500 lbs. (227 kg)



**MTA 10044
SERIES III**

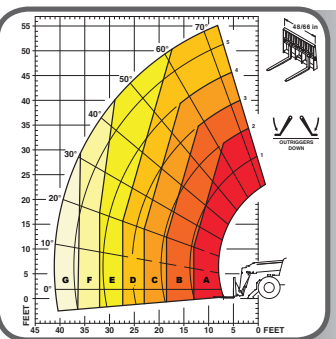
- A** 10,000/10,000 lbs. (4536/4536 kg)
- B** 8,000/8,000 lbs. (3629/3629 kg)
- C** 6,000/8,000 lbs. (2722/3629 kg)
- D** 4,000/6,000 lbs. (1814/2722 kg)
- E** 3,000/6,000 lbs. (1361/2722 kg)
- F** 2,000/4,000 lbs. (907/1814 kg)
- G** 1,500/3,000 lbs. (680/1361 kg)

outriggers up / optional outriggers down



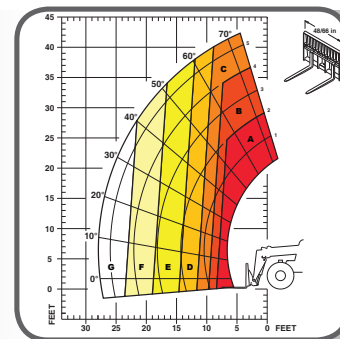
**MTA 10055
SERIES III**
outriggers up

- A** 10,000 lbs. (4536 kg)
- B** 8,000 lbs. (3629 kg)
- C** 6,000 lbs. (2722 kg)
- D** 5,000 lbs. (2268 kg)
- E** 4,000 lbs. (1814 kg)
- F** 3,000 lbs. (1361 kg)
- G** 2,000 lbs. (907 kg)
- H** 1,000 lbs. (454 kg)
- I** 500 lbs. (227 kg)
- J** 250 lbs. (113 kg)



**MTA 10055
SERIES III**
outriggers down

- A** 10,000 lbs. (4536 kg)
- B** 8,000 lbs. (3629 kg)
- C** 6,000 lbs. (2722 kg)
- D** 5,000 lbs. (2268 kg)
- E** 4,000 lbs. (1814 kg)
- F** 3,000 lbs. (1361 kg)
- G** 2,000 lbs. (907 kg)



**MTA 12042
SERIES III**

- A** 12,000/12,000 lbs. (5444/5444 kg)
- B** 10,000/10,000 lbs. (4536/4536 kg)
- C** 8,000/8,000 lbs. (3629/3629 kg)
- D** 6,000/8,000 lbs. (2722/3629 kg)
- E** 4,000/6,000 lbs. (1814/2722 kg)
- F** 3,000/5,000 lbs. (1361/2268 kg)
- G** 2,000/4,000 lbs. (907/1814 kg)

outriggers up / optional outriggers down

MTA SERIES III CONSTRUCTION TELESCOPIC HANDLERS SPECIFICATIONS

		MTA 5519 SERIES III	MTA 6034 SERIES III	MTA 6642 SERIES III	MTA 8044 SERIES III	MTA 9050 SERIES III	MTA 10044 SERIES III	MTA 10055 SERIES III	MTA 12042 SERIES III
CAPACITIES	Lift Capacity (kg)	5,500 lbs. (2495)	6,000 lbs. (2722)	6,600 lbs. (2994)	8,000 lbs. (3629)	9,000 lbs. (4082)	10,000 lbs. (4536)	10,000 lbs. (4536)	12,000 lbs. (5444)
	Maximum Lift Height (m)	19'1" (5.8)	34'3" (10.4)	42'0" (12.8)	44'0" (13.4)	50'1" (15.3)	44'0" (13.4)	55'1" (16.8)	42'4" (12.9)
	Capacity at Maximum Lift Height (kg)	3,000 lbs. (1361)	4,000 lbs. (1815)	6,600 lbs. (2994)	7,000 lbs. (3176)	5,000 lbs. (2268)	8,000 lbs. (3629)	5,000* lbs. (2268)	10,000 lbs. (4536)
	Maximum Forward Reach (m)	11'0" (3.4)	23'3" (7.0)	28'3" (8.6)	30'5" (9.3)	36'7" (11.1)	30'5" (9.3)	41'2" (12.6)	27'11" (8.5)
	Capacity at Max. Forward Reach	1,850 lbs. (840)	900 lbs. (409)	1,000 lbs. (454)	1,000 lbs. (454)	500 lbs. (227)	1,500 lbs. (687)	2,000 lbs. (908)	2,000 lbs. (908)
	Max. Reach Below Grade (mm)	0" (0)	24" (610)	14" (356)	16" (406)	16" (406)	16" (406)	29" (737)	14" (356)
ENGINE	Manufacturer	Yanmar	Deutz	Cummins	Cummins	Cummins	Cummins	Cummins	Cummins
	Power (kW)	69 hp (50.1)	74 hp (55)	120 hp (89)	120 hp (89)	120 hp (89)	120 hp (89)	120 hp (89)	120 hp (89)
	Torque (Nm)	173 ft.-lbs. (235)	244 ft.-lbs. (330)	360 ft.-lbs. (488)	360 ft.-lbs. (488)	360 ft.-lbs. (488)	360 ft.-lbs. (488)	360 ft.-lbs. (488)	360 ft.-lbs. (488)
	Aspiration	Natural	Turbocharged	Turbocharged	Turbocharged	Turbocharged	Turbocharged	Turbocharged	Turbocharged
	Model	4TNV98C Tier IV	TD 3.6 Tier IV	QSF 3.8 Tier IV	QSF 3.8 Tier IV	QSF 3.8 Tier IV	QSF 3.8 Tier IV	QSF 3.8 Tier IV	QSF 3.8 Tier IV
	Rated Speed	2500 rpm	2300 rpm	2500 rpm	2500 rpm	2500 rpm	2500 rpm	2500 rpm	2500 rpm
COMPONENTS	Transmission	Rexroth 2-speed	Dana 3-speed Powershift	Dana 3-speed Powershift	Dana 3-speed Powershift	Dana 3-speed Powershift	Dana 4-speed Powershift	Dana 4-speed Powershift	Dana 4-speed Powershift
	Maximum Travel Speed (km/hr)	15 mph (24)	20.2 mph (32.5)	19.6 mph (31.5)	19.6 mph (31.5)	15.3 mph (24.6)	20.1 mph (32.3)	20.1 mph (32.3)	20.1 mph (32.3)
	Selective Steering	4-wheel 2-wheel Crab	4-wheel 2-wheel Crab	4-wheel 2-wheel Crab	4-wheel 2-wheel Crab	4-wheel 2-wheel Crab	4-wheel 2-wheel Crab	4-wheel 2-wheel Crab	4-wheel 2-wheel Crab
	Hydraulically Actuated Internal Wet-Disc Brakes	2-Wheel				4-Wheel			
	Parking Brake	Spring-Applied, Hydraulic Release (SAHR) on Front Axle							
	Axle Manufacturer	Dana							
HYDRAULIC SYSTEM	Pump Type	Gear							
	Pump Flow (L/min)	20 gpm (76)	29 gpm (110)	41.5 gpm (157)	41.5 gpm (157)	41.5 gpm (157)	41.5 gpm (157)	41.5 gpm (157)	41.5 gpm (157)
	System Pressure (bar)	3,350 psi (231)	3,000 psi (207)	3,000 psi (207)	3,000 psi (207)	3,000 psi (207)	3,000 psi (207)	3,000 psi (207)	3,000 psi (207)
	Hydraulic Tank Capacity (L)	18 gal. (68)	29 gal. (110)	31 gal. (117)	31 gal. (117)	31 gal. (117)	31 gal. (117)	31 gal. (117)	31 gal. (117)
GENERAL SPECIFICATIONS	Approximate Weight (kg)	10,000 lbs. (4536)	15,100 lbs. (6850)	22,000 lbs. (9979)	23,500 lbs. (10659)	29,900 lbs. (13562)	25,300 lbs. (11476)	27,800 lbs. (12610)	25,200 lbs. (11431)
	Length – Less Forks (m)	12'4" (3.8)	16'0" (4.9)	19'1" (5.8)	19'10" (6.1)	21'0" (6.4)	20'0" (6.1)	21'0" (6.4)	19'3" (5.9)
	Width (m)	5'11" (1.80)	7'10" (2.4)	8'0" (2.4)	8'0" (2.4)	8'3" (2.5)	8'3" (2.5)	8'3" (2.5)	8'3" (2.5)
	Ground Clearance (mm)	14" (350)	14" (350)	16" (400)	16" (400)	18" (457)	18" (457)	18" (457)	18" (457)
	Wheelbase (m)	7'6" (2.29)	9'2" (2.8)	10'0" (3.0)	10'0" (3.0)	10'4" (3.1)	10'4" (3.1)	10'4" (3.1)	10'4" (3.1)
	Turning Radius (m)	11'0" (3.35)	12'6" (3.8)	13'8" (4.2)	13'8" (4.2)	13'11" (4.24)	13'11" (4.24)	13'11" (4.24)	13'11" (4.24)
	Overall Height (m)	6'4" (1.93)	7'10" (2.4)	7'10" (2.4)	7'10" (2.4)	8'6" (2.6)	7'11" (2.41)	8'6" (2.6)	7'11" (2.41)
	Frame Leveling	N/A	±10°	±10°	±10°	±10°	±10°	±10°	±10°
	Fuel Capacity (L)	17 gal. (64)	29 gal. (110)	47 gal. (178)	47 gal. (178)	47 gal. (178)	47 gal. (178)	47 gal. (178)	47 gal. (178)

* With outriggers down

TIRE OPTIONS	MTA 5519 SIII	MTA 6034 SIII	MTA 6642 SIII / MTA 8044 SIII	MTA 9050 SIII	MTA 10044 SIII / MTA 10055 SIII / MTA 12042 SIII
12.00 x 16.5 Bias/10 PR	15.00 x 19.5/12 PR	13.00 x 24/12 PR			14.00 x 12 PR
12.00 x 16.5 Bias/10 PR Foam-Filled	15.00 x 19.5/12 PR Foam-Filled	13.00 x 24/12 PR Foam Filled	14.00 x 24/12 PR Foam-Filled		14.00 x 24/12 PR Foam-Filled
12.00 x 16.5 Solid Rubber	15.00 x 19.5 Solid Rubber	13.00 x 24/12 PR Rock	14.00 x 24 Solid Rubber		14.00 x 24 Solid Rubber
12.00 x 16.5/10 PR Turf		13.00 x 24 Solid Rubber			14.00 x 24 Rock

This publication in no way constitutes an offer and the company reserves the right to alter specification without notice.



Manitou North America, LLC. • PO Box 179 • West Bend, WI 53095

Tel: 262-334-9461 • www.manitou.com • 05/2018-MTA Series III-1.5M

©2018 Manitou North America, LLC. All rights reserved. Printed in the U.S.A. A Manitou Group brand.